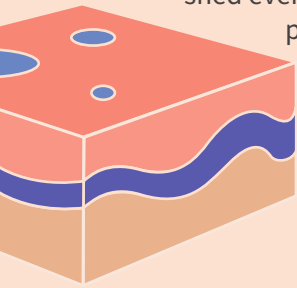


Impact of COVID-19 on the Psoriasis and Psoriatic Arthritis Community in Canada—Highlights from a National Survey



Snapshot of Psoriasis

Psoriasis (PsO) is a chronic inflammatory condition that affects 1-3% of Canadians. Typically, skin cells grow, mature and are shed every 28-30 days but this happens 10 times faster for people with psoriasis. Psoriasis is not contagious.



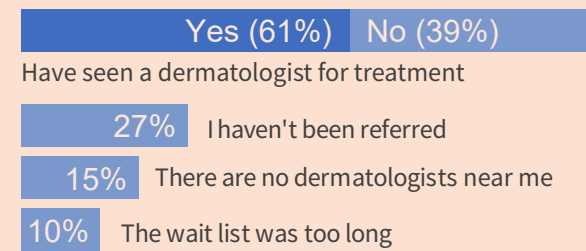
Pre-COVID-19 PsO Symptoms

Psoriasis symptoms can go through cycles of flaring (worsening of symptoms) for periods of time, then subsiding.

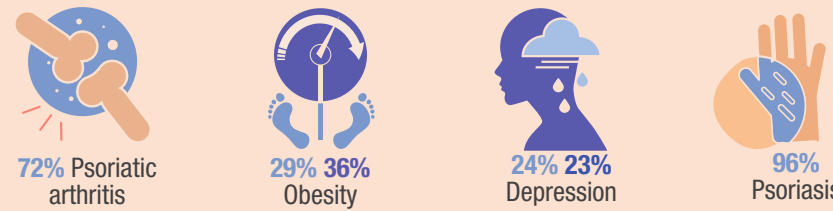


Psoriasis Care

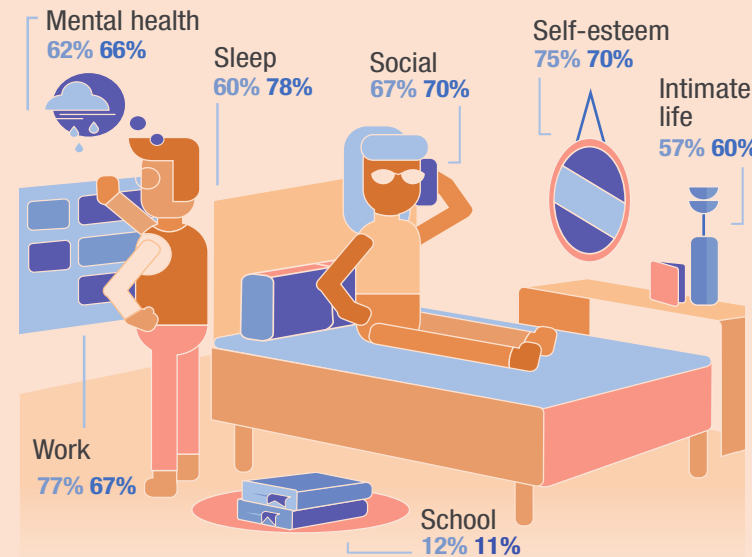
Of respondents who do not see a dermatologist, the majority indicate that their family doctor hasn't referred them.



Psoriasis & PsA Most Common Comorbidities



PsO & PsA Impacts Prior to COVID-19

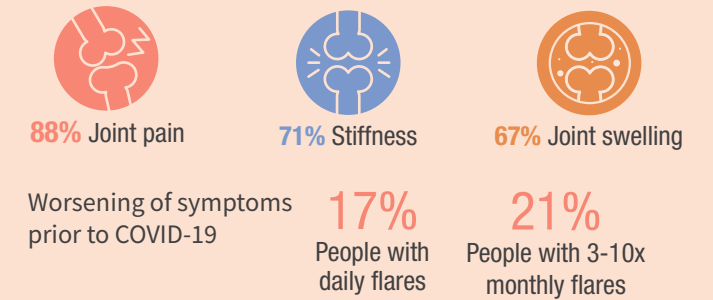


Snapshot of Psoriatic Arthritis

An estimated 1 in 3 people with psoriasis will develop psoriatic arthritis (PsA), a chronic type of inflammatory arthritis that can be debilitating without appropriate care.

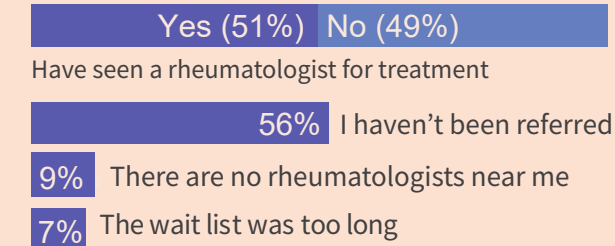
Pre-COVID-19 PsA Symptoms

PsA can flare up for periods when symptoms are worse than usual.

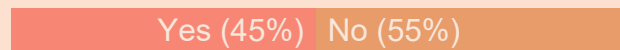


Psoriatic Arthritis Care

Of respondents who do not see a rheumatologist, the majority indicate that their family doctor hasn't referred them.



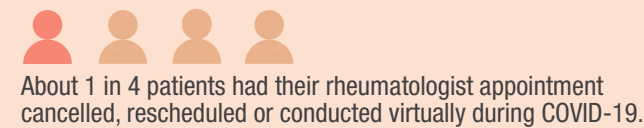
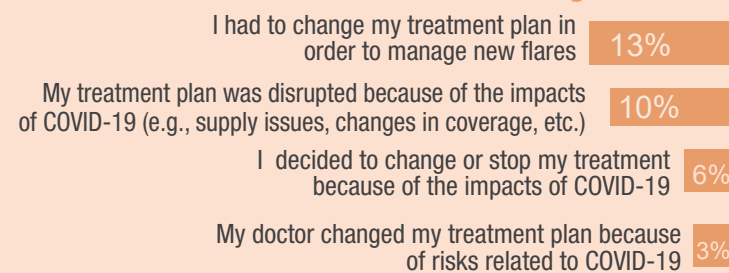
Access to Care During COVID-19



Almost half of respondents avoided seeking care with doctor or at a hospital

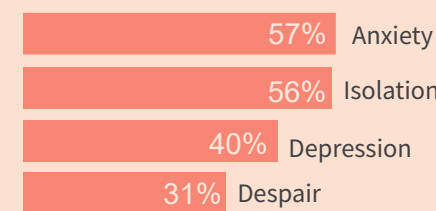


Changes to Access to Treatments During COVID-19



COVID-19 Impacts on Mental Health

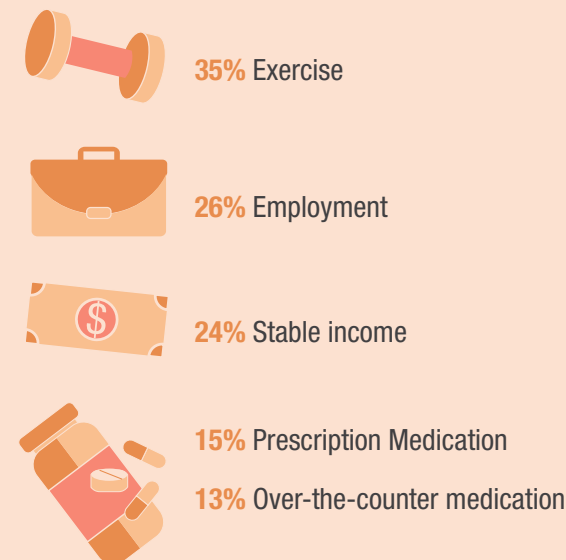
1 in 2 respondents noted that their mental health was "worse" or "much worse" during COVID-19.



29% Percentage of respondents who were able to access mental health supports during the pandemic.

Impacts on Social Determinants of Health

Patients were impacted by the pandemic, reporting worse or much worse access to:



Survey Demographics

